



**higher education
& training**

Department:
Higher Education and Training
REPUBLIC OF SOUTH AFRICA

MARKING GUIDELINE

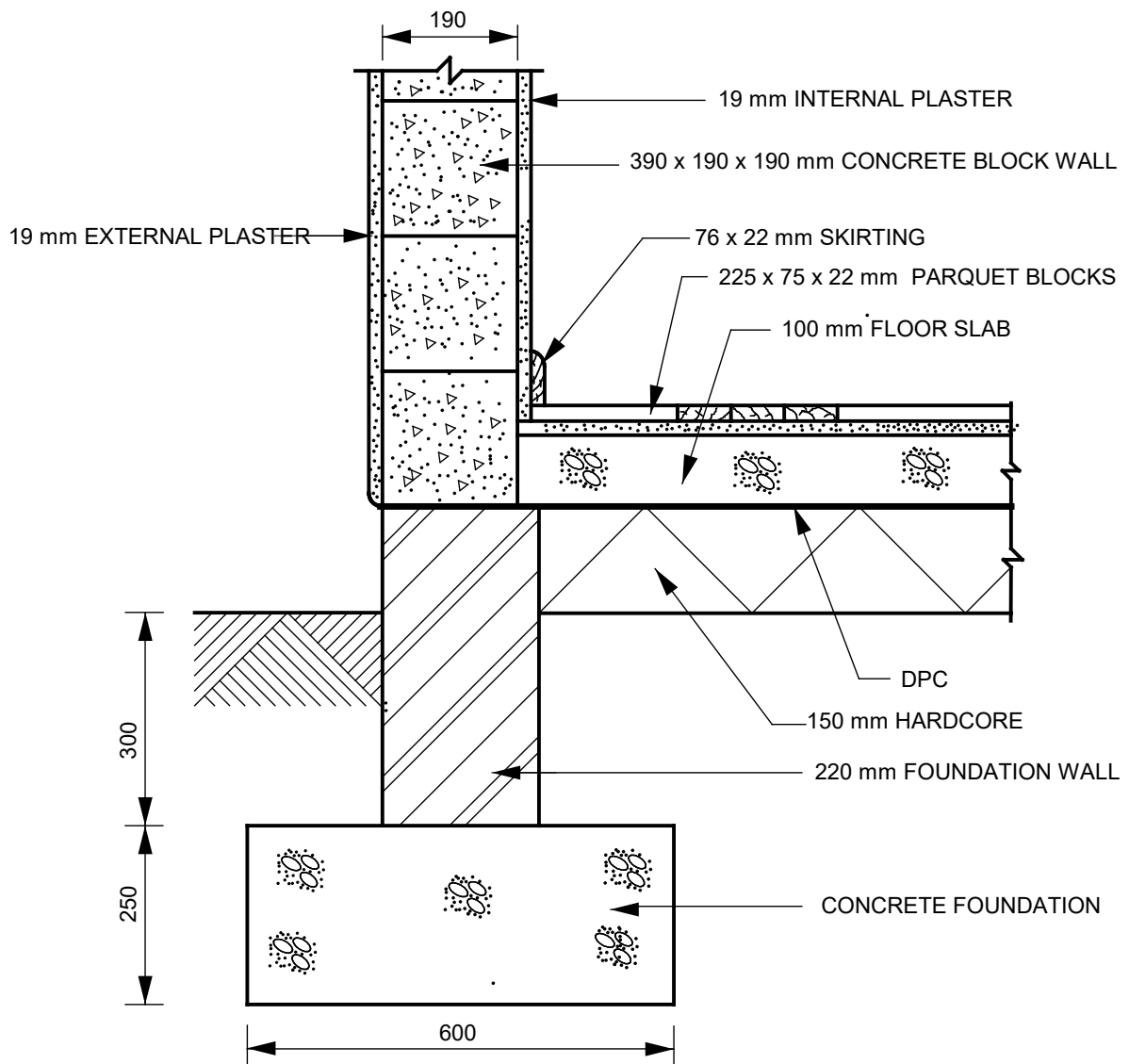
NATIONAL CERTIFICATE

BUILDING DRAWING N2

19 JULY 2018

This marking guideline consists of 19 pages.

QUESTION 1



VERTICAL SECTION THROUGH EXTERNAL WALL

SCALE 1:10

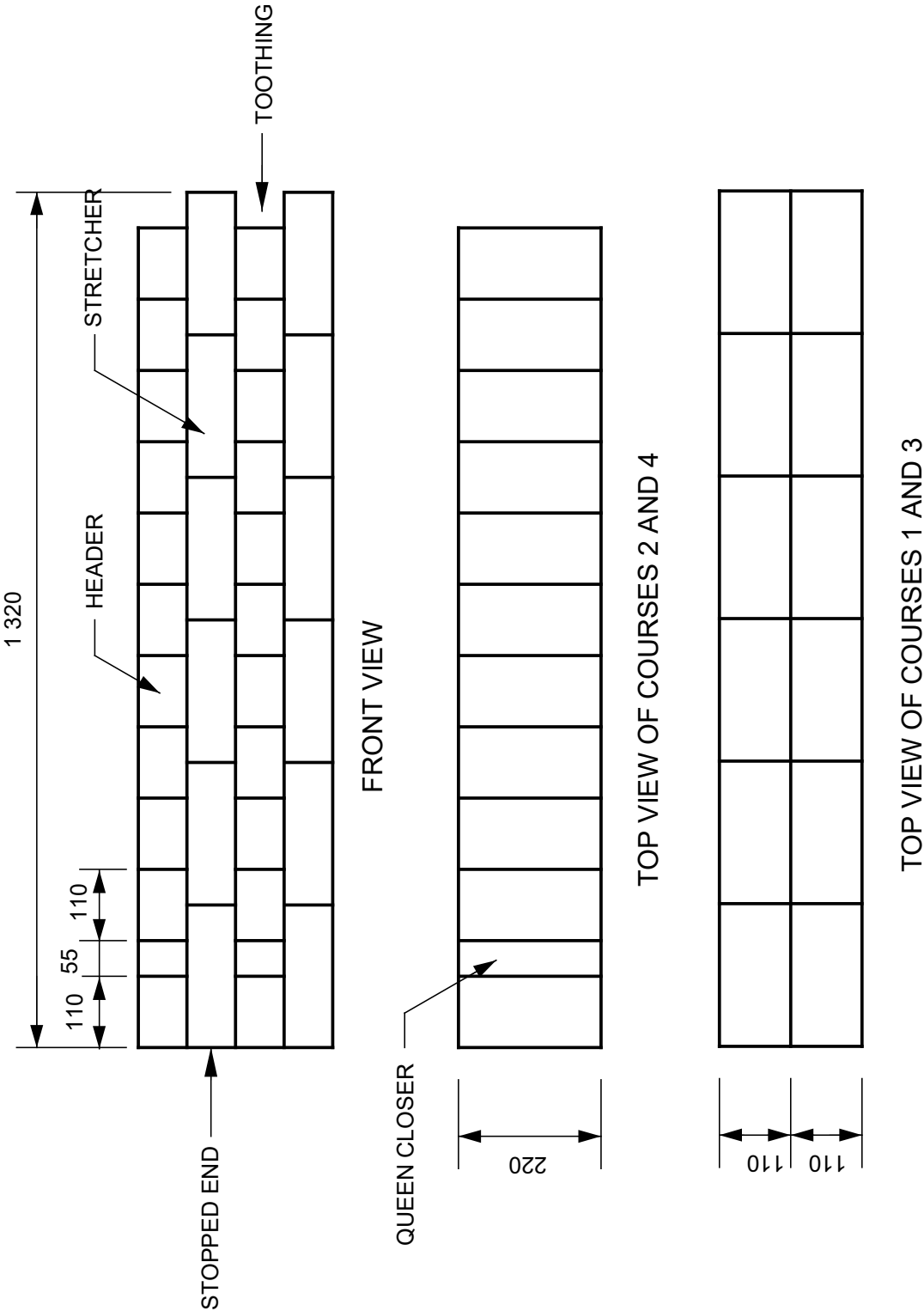
RUBRIC FOR DRAWING QUESTION 1			
PART OF THE DRAWING	MARKING CRITERIA	POSSIBLE MARK	REMARKS
Concrete foundation, foundation wall, hard core	Correct position	3	
	Labeling	3	
	Hatching	3	
Blocks, screed, floor slab, skirting	Correct position	4	
	Hatching	4	
	Labelling	4	
External wall, plaster	Correct position	3	Plaster × 2
	Hatching	3	Plaster × 2
	Labelling	3	Plaster × 2
DPC and ground level	Correct position	2	
	Hatching	1	
	Labelling	2	
	Dimensions	4	
	Subtotal	39	
	Divide by	3	
	Overall correctness	13	
	Line work	4	
	Accuracy	3	
Balance layout and neatness		2	
	TOTAL	22	

NOTE: NO marks should be allocated for any part of the drawing in the incorrect position but marks should be allocated for hatching of that component.

SUMMARY: QUESTION 1

MARKING CRITERIA	POSSIBLE	MARKER	INTERNAL MODERATOR	EXTERNAL MODERATOR
Correct position	12			
Hatching	11			
Labelling	12			
Dimensions	4			
Subtotal	39			
Divide by	3			
Overall correctness	13			
Line work	4			
Accuracy	3			
Balanced layout and neatness	2			
TOTAL	22			

QUESTION 2



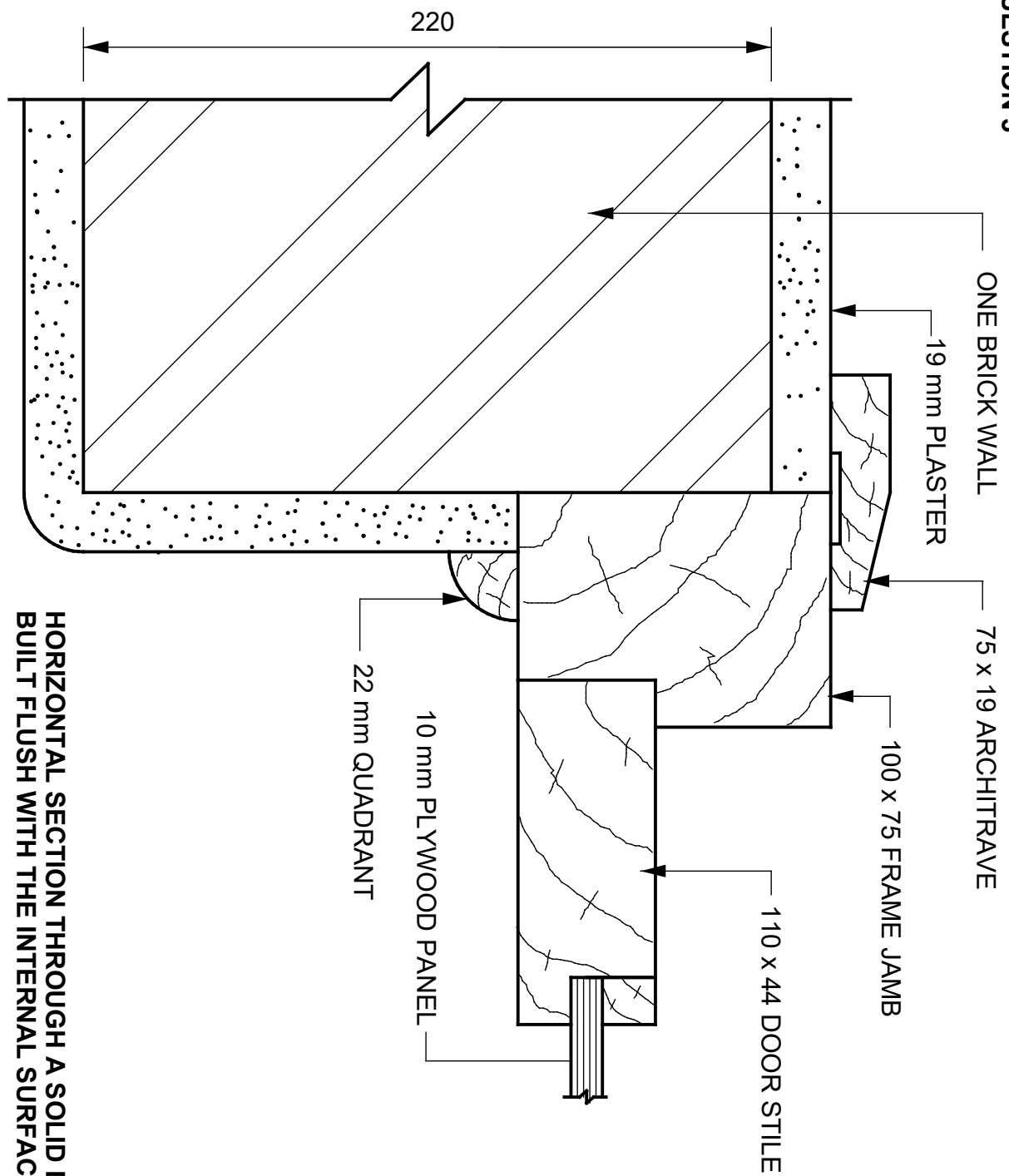
WALL BUILT IN ENGLISH BOND
SCALE 1:10

RUBRIC FOR DRAWING QUESTION 2			
PART OF THE DRAWING	MARKING CRITERIA	POSSIBLE MARK	REMARKS
Front view	Correct	2	Height and bonding
	Toothing	2	
	Stopped end	1	
	Labeling	4	
	Dimensions	2	
Course 1 and 3	Correct	1	Bonding
	Dimension	2	
Course 2 and 4	Correct	1	
	Dimension	1	
	Subtotal	16	
	Divide by	2	
	Overall correctness	8	
	Line work	3	
	Accuracy	3	
Balance layout and neatness		2	
	TOTAL	16	

NOTE: NO marks should be allocated for any part of the drawing in the incorrect position but marks should be allocated for hatching of that component.

SUMMARY: QUESTION 2

MARKING CRITERIA	POSSIBLE	MARKER	INTERNAL MODERATOR	EXTERNAL MODERATOR
Correct	4			
Toothing	2			
Stopped end	1			
Labelling	4			
Dimensions	5			
Subtotal	16			
Divide by	2			
Overall correctness	8			
Line work	3			
Accuracy	3			
Balanced layout and neatness	2			
TOTAL	16			

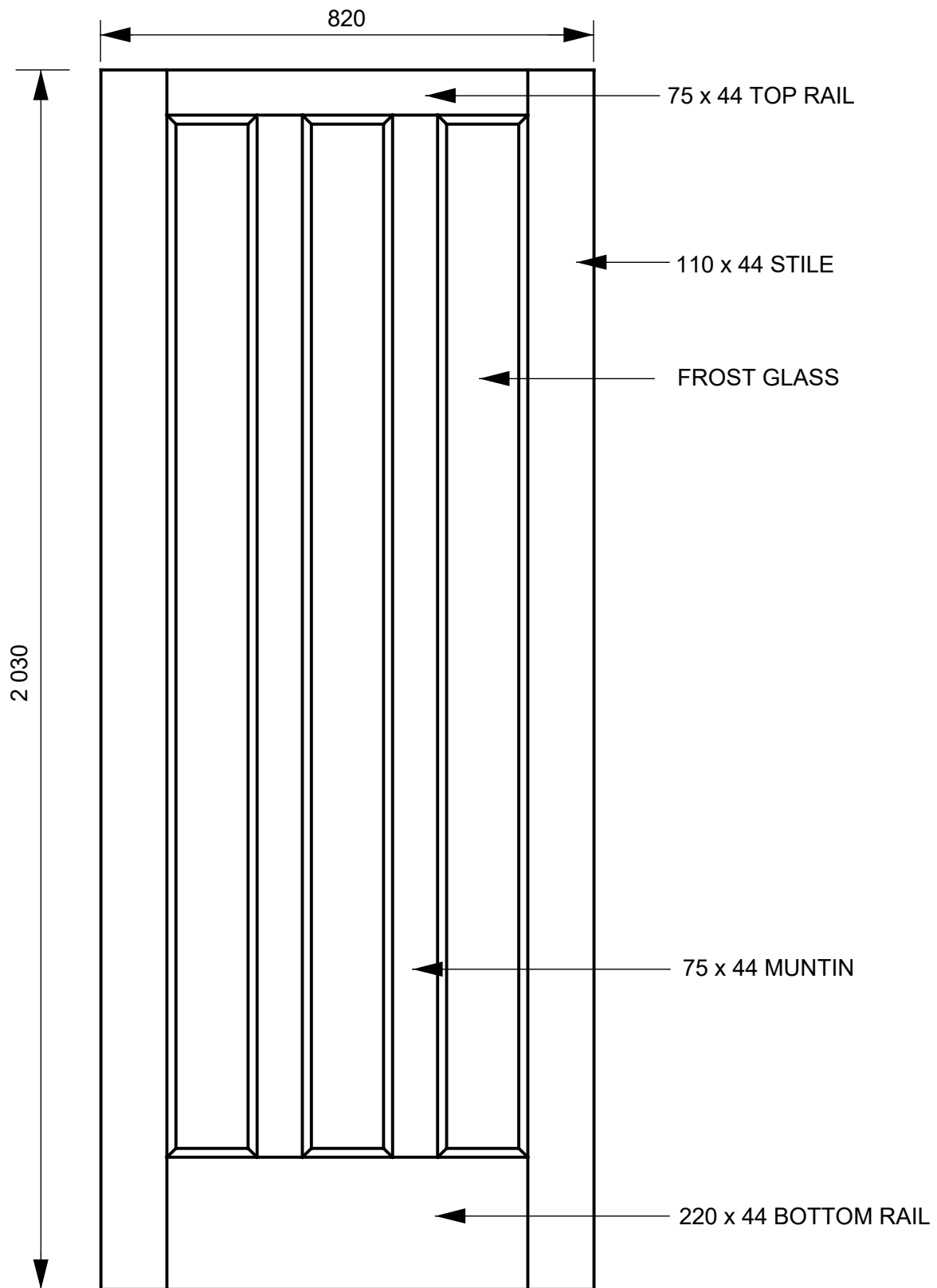
QUESTION 3

RUBRIC FOR DRAWING QUESTION 3			
PART OF THE DRAWING	MARKING CRITERIA	POSSIBLE MARK	REMARKS
Wall	Correct	1	
	Hatching	1	
	Labeling	1	
	Dimension	1	
Plaster	Correct	2	
	Hatching	1	
	Labelling	1	
Frame jamb, door stile, panel, quadrant, planted mould, architrave	Correct position	6	
	Hatching	6	
	Labelling	6	
	Subtotal	26	
	Divide by	3,25	
	Overall correctness	8	
	Line work	3	
	Accuracy	3	
Balance layout and neatness		1	
	TOTAL	15	

NOTE: NO marks should be allocated for any part of the drawing in the incorrect position but marks should be allocated for hatching of that component.

SUMMARY: QUESTION 3

MARKING CRITERIA	POSSIBLE	MARKER	INTERNAL MODERATOR	EXTERNAL MODERATOR
Correct position	9			
Hatching	8			
Labelling	8			
Dimensions	1			
Subtotal	26			
Divide by	3,25			
Overall correctness	8			
Line work	3			
Accuracy	3			
Balanced layout and neatness	1			
TOTAL	15			

QUESTION 4**FRONT VIEW OF A THREE LIGHT DOOR**

SCALE 1:10

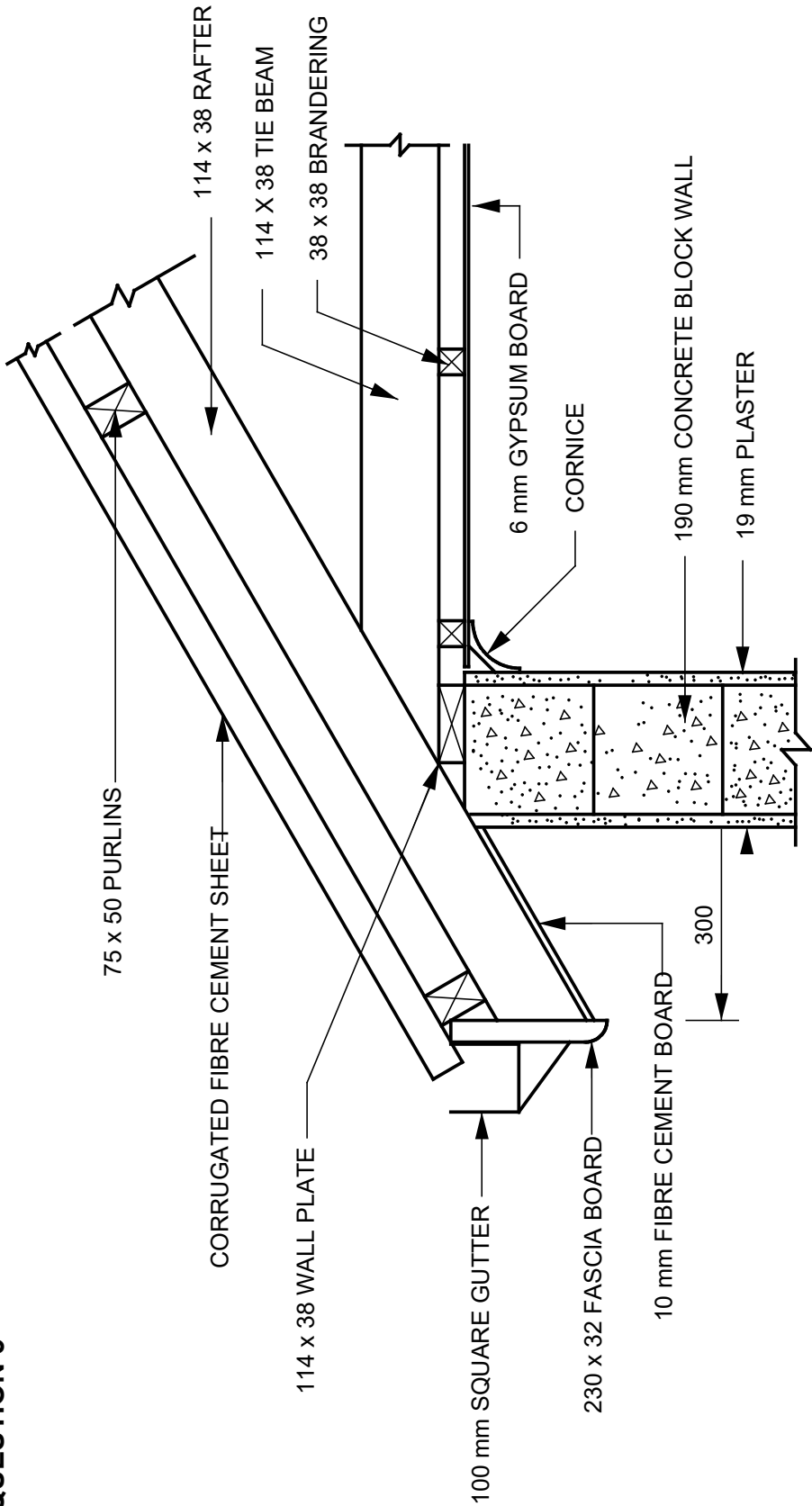
RUBRIC FOR DRAWING QUESTION 4			
PART OF THE DRAWING	MARKING CRITERIA	POSSIBLE MARK	REMARKS
Stile	Correct position	1	
	Labeling	1	
Top rail	Correct position	1	
	Labeling	1	
Bottom rail	Correct position	1	
	Labelling	1	
Muntin	Correct position	2	
	Labelling	1	
Glass	Correct position	3	
	Labeling	1	
	Dimensions	2	
	Subtotal	15	
	Divide by	2,5	
	Overall correctness	6	
	Line work	4	
	Accuracy	3	
Balance layout and neatness		1	
	TOTAL	14	

NOTE: NO marks should be allocated for any part of the drawing in the incorrect position but marks should be allocated for hatching of that component.

SUMMARY: QUESTION 4

MARKING CRITERIA	POSSIBLE	MARKER	INTERNAL MODERATOR	EXTERNAL MODERATOR
Correct position	8			
Labelling	5			
Dimensions	2			
Subtotal	15			
Divide by	2,5			
Overall correctness	6			
Line work	4			
Accuracy	3			
Balanced layout and neatness	1			
TOTAL	14			

QUESTION 5



VERTICAL SECTION THROUGH THE EAVES

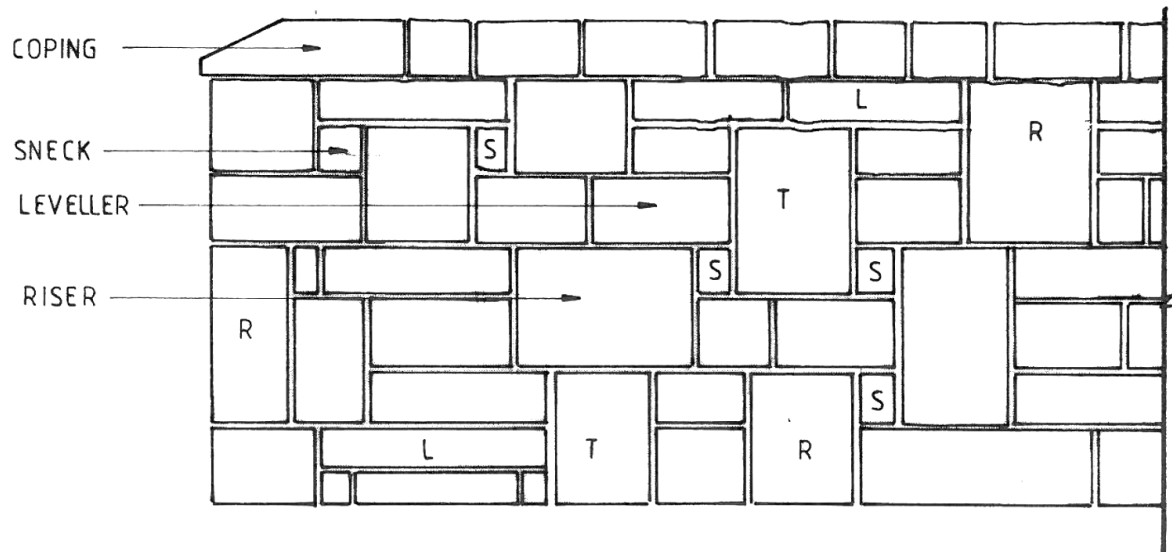
SCALE 1:10

RUBRIC FOR DRAWING QUESTION 5			
PART OF THE DRAWING	MARKING CRITERIA	POSSIBLE MARK	REMARKS
Wall, plaster	Correct position	2	
	Hatching	3	Wall × 2
	Labeling	2	
Wall plate, rafter, tie beam, purlin, covering	Correct position	5	
	Hatching	2	
	Labelling	5	
Branding, ceiling board, cornice	Correct position	3	
	Hatching	2	
	Labelling	3	
Gutter	Correct position	1	
	Labelling	2	
	Dimension	1	
	Subtotal	31	
	Divide by	2,583	
	Overall correctness	12	
	Line work	5	
	Accuracy	4	
Balance layout and neatness		2	
	TOTAL	23	

NOTE: NO marks should be allocated for any part of the drawing in the incorrect position but marks should be allocated for hatching of that component.

SUMMARY: QUESTION 5

MARKING CRITERIA	POSSIBLE	MARKER	INTERNAL MODERATOR	EXTERNAL MODERATOR
Correct position	11			
Hatching	7			
Labelling	12			
Dimensions	1			
Subtotal	31			
Divide by	2,583			
Overall correctness	12			
Line work	5			
Accuracy	4			
Balanced layout and neatness	2			
TOTAL	23			

QUESTION 6: MASONRY**SQUARED RUBBLE UNCOURSED**

RUBRIC FOR DRAWING QUESTION 6			
PART OF THE DRAWING	MARKING CRITERIA	POSSIBLE MARK	REMARKS
Bonding	Correct	2	
Riser	Correct position	1	
	Labeling	1	Footing only
Sneck	Correct position	1	
	Labelling	1	Including bagging
Coping	Correct position	1	
	Labelling	1	
Leveller/Trough	Correct position	1	
	Labelling	1	
	Subtotal	10	
	Divide by	2	
	Overall correctness	5	
	Line work	3	
Balance layout and neatness		2	
	TOTAL	10	

NOTE: NO marks should be allocated for any part of the drawing in the incorrect position but marks should be allocated for hatching of that component.

SUMMARY: QUESTION 6

MARKING CRITERIA	POSSIBLE	MARKER	INTERNAL MODERATOR	EXTERNAL MODERATOR
Correct bonding	2			
Correct position	4			
Labelling	4			
Subtotal	10			
Divide by	2			
Overall correctness	5			
Line work	3			
Balanced layout and neatness	2			
TOTAL	10			

TOTAL: 100